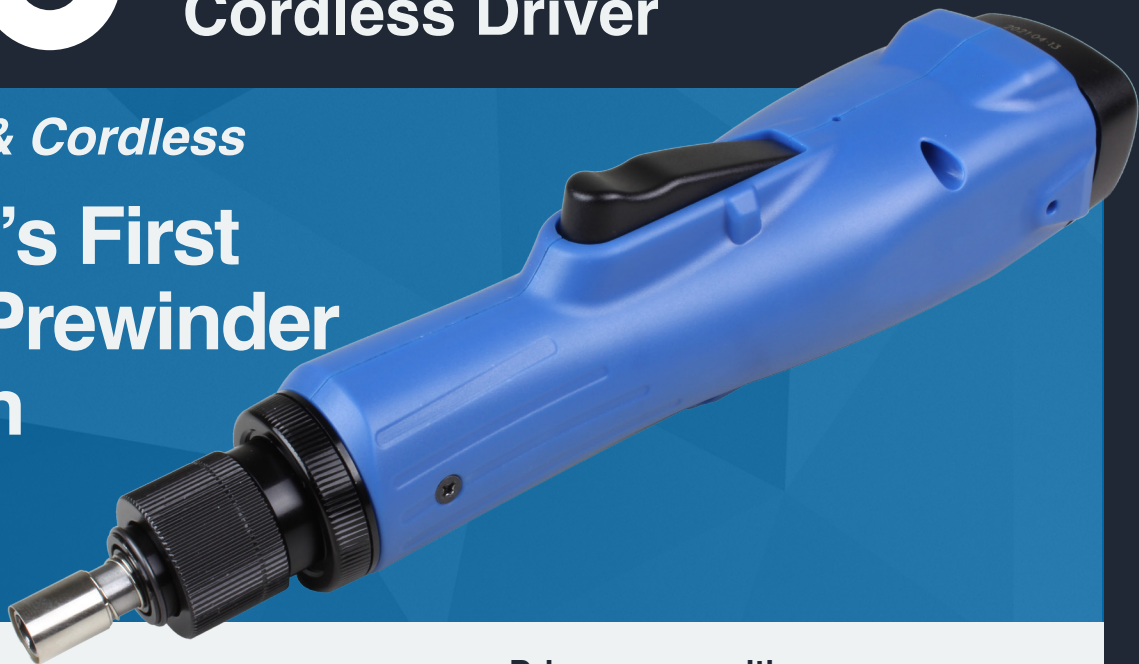


KATO® KFS-30 Cordless Driver

Speed, Power & Cordless

The World's First Cordless Prewinder Installation Tool!

www.katofastening.com



KFS-30 Cordless Driver

Part No. CT5430

KATO Fastening Systems is proud to introduce the all **new KFS-30 Cordless driver**, our most versatile driver yet! The KFS-30 driver can install inserts 2-56 and M2.5 up to 1/4" and M6 all powered by a rechargeable lithium-ion battery. The KFS-30 driver has the same auto-reversing feature found in all KATO drivers. The KFS-30 offers two installation options: the KATO Prewinder Electric (KPE) tool and the KATO Hex Electric (KHE) tool. Best of all the KFS-30 driver includes the battery charger and two lithium-ion batteries. No separate part numbers to remember or purchase!

Features

- ✓ Fast charging lithium-ion battery.
- ✓ Auto-Reversing for reduced installation time.
- ✓ 100% compatible with existing KATO Prewinder Electric tools (KPE Series).
- ✓ 100% compatible with existing KATO Hex Electric tools (KHE Series).
- ✓ Available for both Tangless® and tang CoilThread inserts.

Driver comes with:

KFS-30B Li-Ion Batteries

Part No. CT5430B



KFS-30C Battery Charger

Part No. CT5430C



Phone: 757.873.8980

Web: www.katofastening.com

Email: sales@katofastening.com



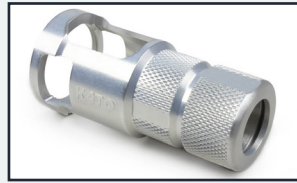
How to Order:

Complete KATO Prewinder Electric (KPE) Setup



KFS-30
CT5430

+



Prewinder Adapter
CT5430-PA

+



Prewinder Electric
Table Below

=



Complete

Complete KATO Hex Electric (KHE) Setup



KFS-30
CT5430

+



Hex Electric
Table Below

=



Complete

Thread Size	KATO Prewinder Electric		KATO Hex Electric	
	Tangless	Tanged	Tangless	Tanged
Unified Coarse				
2-56	2KPEC-02	KPEC-02	2KHEC-02	KHEC-02
4-40	2KPEC-04	KPEC-04	2KHEC-04	KHEC-04
6-32	2KPEC-06	KPEC-06	2KHEC-06	KHEC-06
8-32	2KPEC-2	KPEC-2	2KHEC-2	KHEC-2
10-24	2KPEC-3	KPEC-3	2KHEC-3	KHEC-3
1/4-20	2KPEC-4	KPEC-4	2KHEC-4	KHEC-4
Unified Fine				
10-32	2KPEF-3	KPEF-3	2KHEF-F3	KHEF-3
			2KHEF-L3	
1/4-28	2KPEF-4	KPEF-4	---	---
Metric Coarse				
M2.5X.45	2KPEM-2.5	KPEM-2.5	2KHEM-F2.5	KHEM-2.5
			2KHEM-L2.5	
M3X.5	2KPEM-3	KPEM-3	2KHEM-F3	KHEM-3
			2KHEM-L3	
M4X.7	2KPEM-4	KPEM-4	2KHEM-F4	KHEM-4
			2KHEM-L4	
M5X.8	2KPEM-5	KPEM-5	2KHEM-F5	KHEM-5
			2KHEM-L5	
M6X1	2KPEM-6	KPEM-6	2KHEM-F6	KHEM-6
			2KHEM-L6	



Linear Torque Arm
Part No. 2KLRM-1

Complete the System with a KATO Torque Arm



Articulating Torque Arm
Part No. 2KARM-1

Phone: 757.873.8980
Web: www.katofastening.com
Email: sales@katofastening.com

